

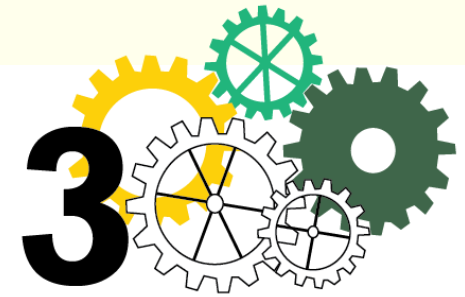
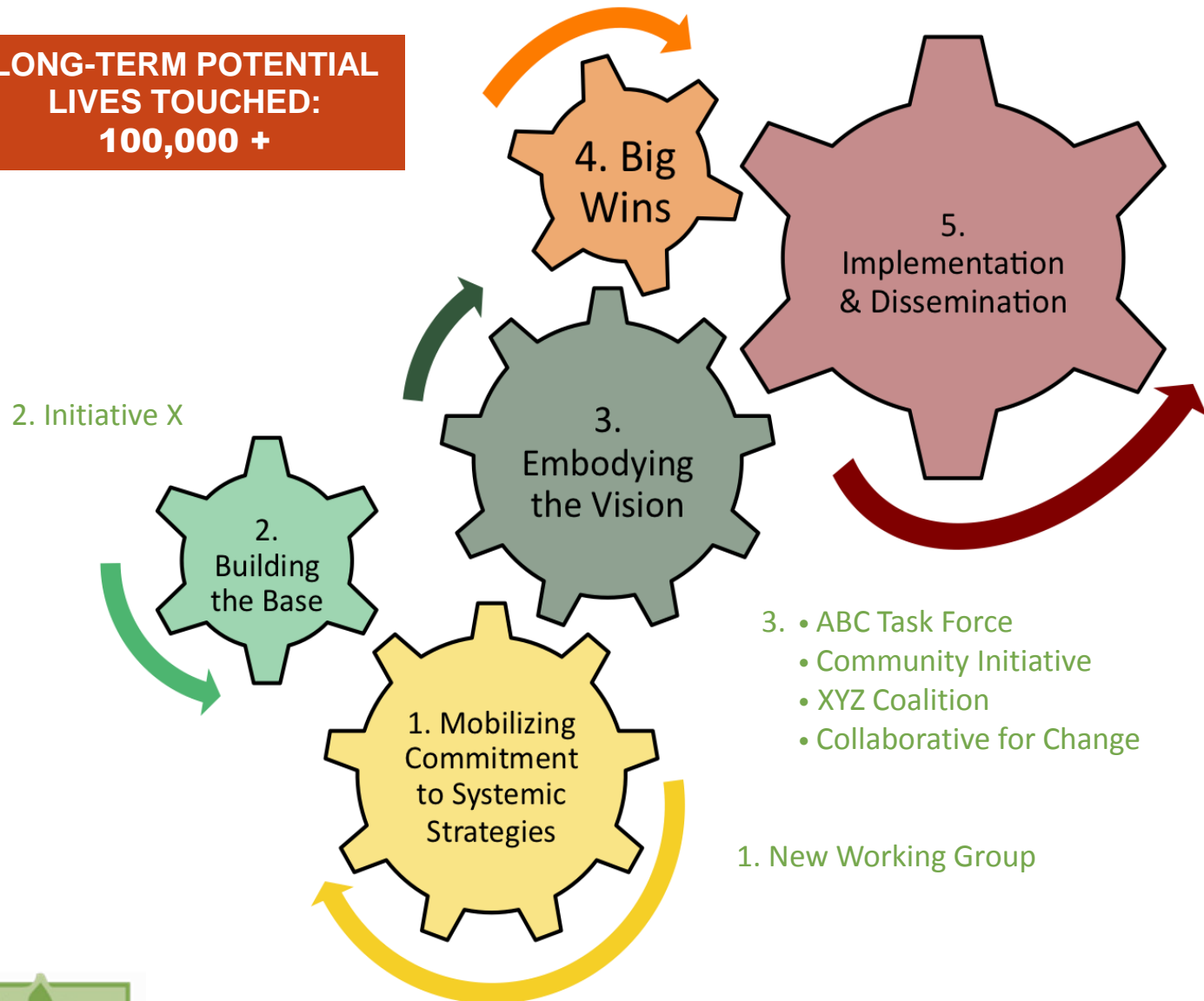
**YOUR  
LOGO**

# Contributions to Systemic Change

[ORG NAME]

August 2015

**LONG-TERM POTENTIAL  
LIVES TOUCHED:  
100,000 +**



**SYSTEMIC CHANGE INDEX**

Your rating reflects your role, extent of engagement, potential scale and success-to-date averaged across all your systemic change work, relative to your operating budget. As your partnerships strengthen and model your vision, your overall index will increase.



Visit the [SEED Library](#) for tips and resources.

